

RaPort - Handheld Raman Analyzer

The only high-end level handheld instrument on the market combining portability and superior quality of measurements

Features & Benefits

- Identification of substance at the concentration as low as 1%
- Real-time in-situ identification
- Bluetooth connection
- Android/Windows software
- Independent power supply and line supply
- Large database can be complemented by user
- Simplicity and usability

Specifications

- Laser 532 nm
- Resolution from 6 cm^{-1}
- Weight 2 kg without laptop/touchpad/computer
- Up to 6 hours of off-line operation
- Time per measurement <3 s
- Operating mode start - 2 min

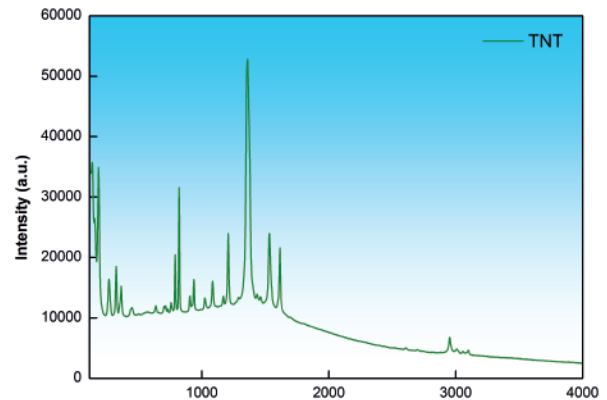


Enjoy the simplicity of RaPort analyses with your tablet or smartphone using EnSpectr Android/Windows software!

Security

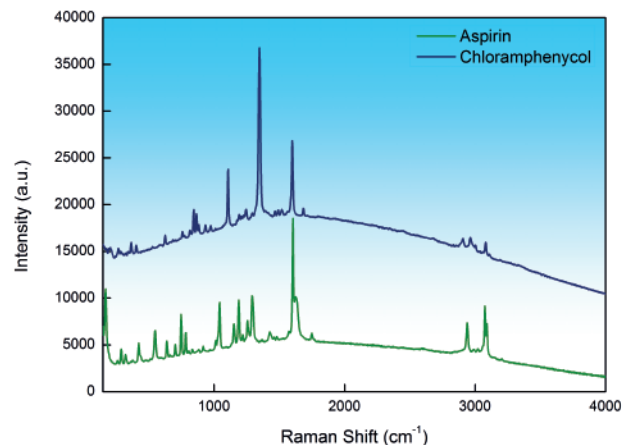
RaPort identifies hazardous materials and compounds through package: narcotic drugs, explosives and their plasticizers and precursors, toxic solvents and nitro compounds.

- Customs & Cargo inspection
- Forensic identification
- Security check



Pharmaceuticals

- Raw Material identification right in the warehouse
- Long off-line operation time (up to 6 hours)
- Saves expenses and time on laboratory analysis



In-Field Research

Bringing qualities of laboratory molecular analysis to the field, **RaPort secures precise material identification** with utmost mobility.

- Geology and Mineralogy
- Archeology
- Gemstone identification
- Chemical substances identification

