

PM-125-01

PM photonic crystal fiber

OPTICAL PROPERTIES

Cut-off wavelength:	< 1000 nm
Attenuation @ 1310 nm:	< 3 dB/km
Attenuation @ 1383 nm:	< 10dB/km
Attenuation @ 1550 nm:	< 2.2dB/km
Beat Length :	<1.5mm@1310nm
Cross-talk:	<-22dB/1km@1310nm

PHYSICAL PROPERTIES

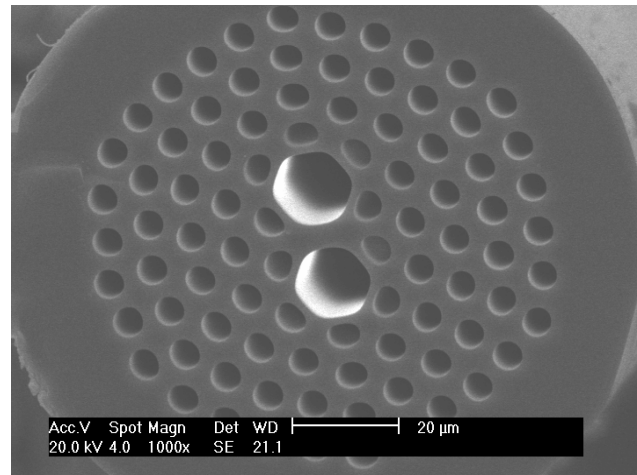
Material:	Pure silica
Core diameter*:	X axis 4μm Y axis 15μm
Cladding diameter:	125 ± 3 μm
Coating diameter:	245 ± 5μm
Coating material:	Acrylate
Available length:	up to 1km

*

X axis: The direction along dual big air hole centers

Y axis: The vertical direction of Y axis

CROSS SECTION PHOTOGRAPH SAMPLE



TYPICAL SPECTRAL ATTENUATION

