

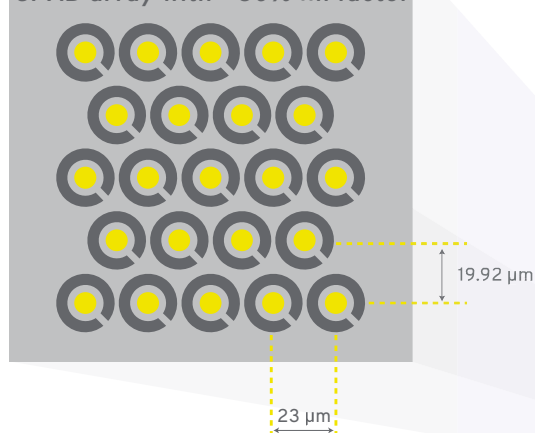
SPAD23

Description

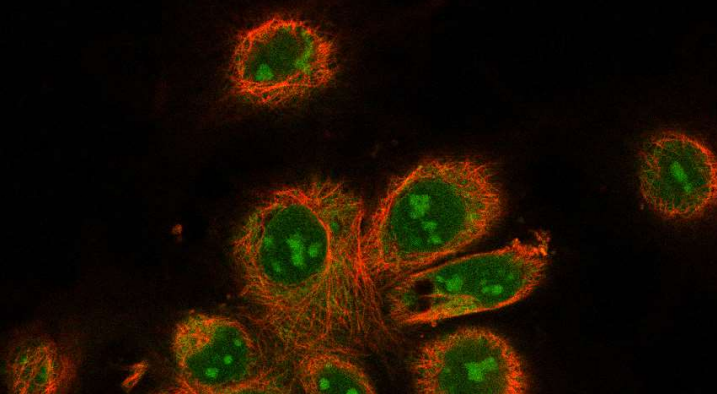
SPAD23 is a detector array with 23 hexagonally packed single-photon avalanche diodes (SPADs) with best-in-class performance.

- ✓ Optimized for a wide detection spectra and low noise
- ✓ Credit card-sized system with 20 ps time tagging

SPAD array with >80% fill factor



A schematic representation of the 23 SPADs placed on a hexagonal grid.



Applications

Confocal microscopy

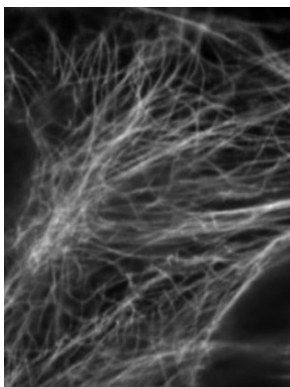
SPAD arrays increase light collection and enable innovation in the field of confocal scanning microscopy. This innovation finally leads to a sharper and brighter image with functional information about the underlying molecular function, interactions and environment.

Applications:

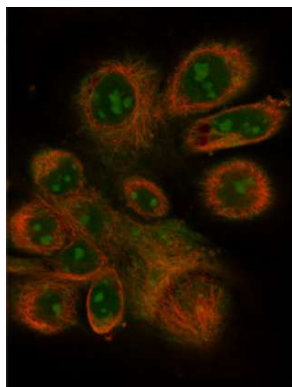
Image scanning microscopy (ISM), quantum ISM (Q-ISM), fluorescence lifetime imaging (FLIM), fluorescence correlation spectroscopy (FCS), stimulated emission depletion microscopy (STED)

Why SPAD arrays?

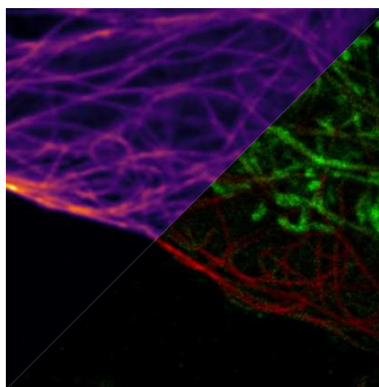
- Achieve super-resolution with a standard confocal microscope
- Increase light collection
- Increase imaging speed
- Reduce background noise



A confocal microscopy image.



A multi-channel confocal microscopy image.



An intensity vs. fluorescence lifetime image.

Quantum information

Temporal photon correlations and photon number resolving (PNR) enable probing of quantum properties of light. Our detector has an extremely low crosstalk and thus enables reliable measurements of second and third order photon correlations, as well as quantum random number generation for unbreakable encryption.

Applications:

Antibunching and coincidence correlation, quantum random number generation

Why SPAD arrays?

- Simplify setup with single-chip multi-channel detector
- Increase data rate with detector parallelization
- Photon number resolving (PNR) detection

Operating conditions & technical specifications

Recommended operating conditions

SYMBOL	PARAMETER	MIN	MAX	UNIT
Operating voltages				
V_{ex}	SPAD excess bias	4	9	V
Environment				
T		-55	35	°C

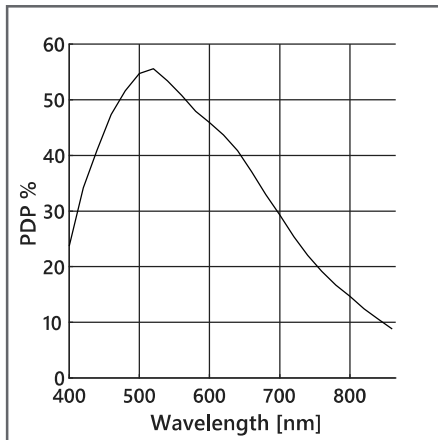


Typical technical specifications

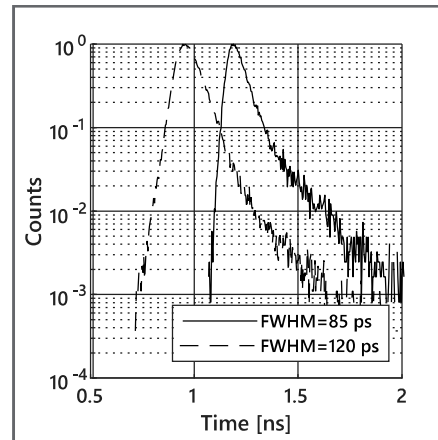
PARAMETER	CONDITIONS	TYP
Peak detection probability	$V_{ex} = 9\text{ V}$	55% @ 520 nm
Wavelength window with PDP >35%	$V_{ex} = 9\text{ V}$	440-660 nm
Fill factor	Collimated light	> 80%
Median dark count rate	$V_{ex} = 9\text{ V}$ $T = 20^\circ\text{C}$	< 100 cps
Number of noisy pixels with DCR > 1 kcps	$V_{ex} = 9\text{ V}$	1
Dead time	$V_{ex} = 9\text{ V}$	50 ns
Timing jitter	$V_{ex} = 9\text{ V}$	< 120 ps
Afterpulsing	$V_{ex} = 9\text{ V}$	0.1%
Crosstalk	$V_{ex} = 9\text{ V}$	0.14%
Maximum count rate per pixel		7.8 Mcps
Time-tagging resolution		20 ps



Typical performance characteristics



Photon detection probability.



Excellent timing jitter with a FWHM of <120 ps for wavelengths between 510 and 785 nm.

System integration

A system overview is shown on the right. For operation, only two plugs are required, a 5 V power supply and a USB3 connection.

The software provides functionalities for photon-counting and time-tagging modes. It can be accessed through TCP/IP for easy integration into LabVIEW, MATLAB or Python.

Credit card-sized system, housing an FPGA and the SPAD23 sensor.



■ 東京本社
〒104-0032 東京都中央区八丁堀3-25-10 JR八丁堀ビル6階
TEL:03-6659-7540 FAX:03-6659-7541
■ 神戸オフィス
〒650-0011 神戸市中央区下山手通5-12-4-301
TEL:078-335-5531 FAX:078-335-5532
<https://www.msh-systems.com> E-mail:sales@msh-



Pi Imaging Technology SA
EPFL Innovation Park
1015 Lausanne, Switzerland

info@piimaging.com
www.piimaging.com
+41 76 5733 314

