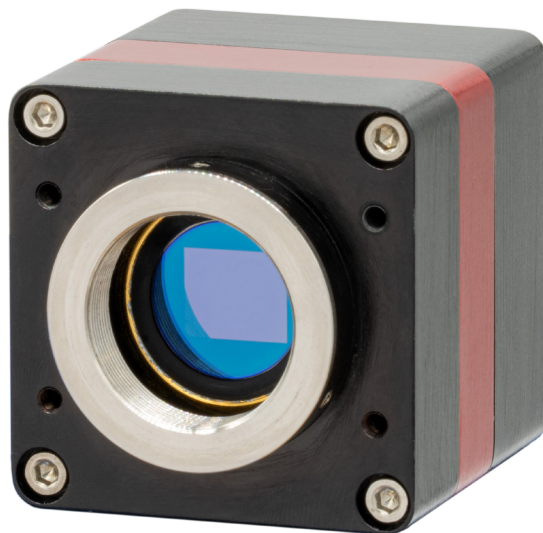


# OWL 2560

2560 x 2048, VIS-SWIR Camera



**CoaXPress**<sup>®</sup>

Preliminary

## Key Features and Benefits

- **2560 x 2048, 3.45 $\mu$ m pitch VIS-SWIR sensor**  
5MP resolution imaging from 0.4 $\mu$ m to 1.7 $\mu$ m
- **On-board Intelligent 3 point NUC and ALC**  
Real time, optimal video in all light conditions
- **Designed for Harsh environments**  
High Shock, Vibration and extreme Temperature resistance
- **Global Shutter**  
60Hz full frame video, with no distortion (ideal for triggering)
- **Low Noise Electronics**  
No artificial noise added, optimising low light capability

Resolution	2560 x 2048
Frame Rate	up to 60Hz
CoaXPress	8/12 bit
Wavelength Range	0.4 to 1.7 $\mu$ m

## Specification for Owl 2560

Sensor	InGaAs PIN-Photodiode
Active Pixel	2560 x 2048
Pixel Pitch	3.45µm x 3.45µm
Active Area	Diagonal 11.4 mm□Type 1/1.4□
Spectral Response <sup>1</sup>	0.4µm to 1.7µm
Readout Noise (RMS) <sup>2</sup>	LG: <150e HG: <90e
Peak Quantum Efficiency	>75% @ 1.2µm
Full Well Depth	LG: 45ke- HG: 20k
Pixel Operability	>99.5%
Dark Current (e/p/s)	<19,000 @ 15°C
Digital Output Format	8/12 bit
Shutter Mode	Global Shutter
Frame Rate	30Hz in 12 bit / 60Hz in 8 bit
Optical Interface	C Mount (selection of SWIR Lens available)
Dynamic Range (Typ)	49.5dB
Trigger Interface	Trigger IN and OUT- TTL compatible
Power Supply	12V DC ± 0.5V
TE Cooling	Active
Interface	CXP
Camera Power Consumption <sup>3</sup>	<5W with TEC ON, NUC ON ?
Operating Temperature <sup>4</sup>	-20 to + 55°C
Storage Temperature	-55° to + 85°C
Dimensions (excluding standard mounting) <sup>5</sup>	45 x 45 x 45
Weight	240g
Raptor Photonics Limited reserves the right to change this document at any time without notice and disclaims liability for editorial, pictorial or typographical errors. This product is under the export control of the UK government and may be subject to a single individual export license before shipment. Note 1: Optional filters available: Low, High or bandpass. Note 2: Typical readout noise is calculated from an average of the last 20 cameras shipped. Note 3: Measured in an ambient of 25°C with adequate heat sinking. For more detailed power consumption values, please refer to the user manual. Note 4: Extended operating temperature range on request. Note 5: Dimensions include all connector parts on the camera interface. Note 6: Please consult us to check our range of lenses.	

## Specification for Owl 2560

### Camera

OWL 2560 Digital Camera	OW1.7-VS-CXP-2560
Power Supply Cable	RPL-HR4-K

### Optional Accessories

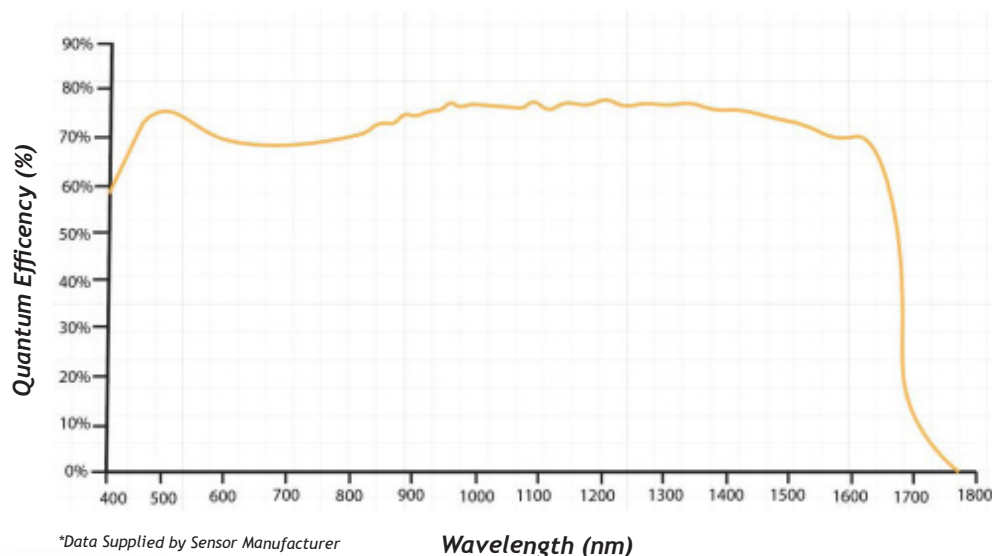
Optical SWIR Lenses <sup>6</sup>	RPL-xx-xxx
----------------------------------	------------

### Custom Options

- No C-Mount, M42
- Board Level
- Extended operational temp -40°C to +75°C
- Flexi-rigid electronics to fit specific EO Systems
- Customized mechanics
- Digital video output eg. HD-SDI

### Applications

- HD Long range day/night SWIR imaging
- Active Imaging
- Airborne and Ground Payload
- Handheld Systems
- Imaging through Fog
- Range Finding
- Driving Vision Enhancement (DVE)
- Space Situational Awareness
- Earth Observation



For detailed technical drawings, volume pricing or to set up a demo, contact us at [sales@raptorphotronics.com](mailto:sales@raptorphotronics.com)

Document#: INTOWL2560-CXP-0425